



[DBPR HOME](#) |
 [ABOUT DBPR](#) |
 [DBPR DIVISIONS](#) |
 [CONTACT DBPR](#)

[BCIS Home](#) |
 [Log In](#) |
 [User Registration](#) |
 [Hot Topics](#) |
 [Submit Surcharge](#) |
 [Stats & Facts](#) |
 [Publications](#) |
 [Contact Us](#) |
 [BCIS Site Map](#) |
 [Links](#) |
 [Search](#)



Product Approval
USER: Public User

[Product Approval Menu](#) >
 [Product or Application Search](#) >
 [Application List](#) >
 Application Detail

▶ OFFICE OF THE SECRETARY

| FL # | FL14444-R4 | | | | | | | | |
|--|--|-----------------|-------------|---------|------|---------|------|---------|------|
| Application Type | Revision | | | | | | | | |
| Code Version | 2020 | | | | | | | | |
| Application Status | Approved | | | | | | | | |
| Comments | | | | | | | | | |
| Archived | <input type="checkbox"/> | | | | | | | | |
| Product Manufacturer | Rolling Door Industries, LLC | | | | | | | | |
| Address/Phone/Email | 8214 NW 64th St Miami, FL 33166 (305) 599-9977 mail@rolling-door.com | | | | | | | | |
| Authorized Signature | Ernesto Rodriguez mail@rolling-door.com | | | | | | | | |
| Technical Representative | | | | | | | | | |
| Address/Phone/Email | | | | | | | | | |
| Quality Assurance Representative | | | | | | | | | |
| Address/Phone/Email | | | | | | | | | |
| Category | Exterior Doors | | | | | | | | |
| Subcategory | Roll-Up Exterior Door Assemblies | | | | | | | | |
| Compliance Method | Evaluation Report from a Florida Registered Architect or a Licensed Florida Professional Engineer <input type="checkbox"/> Evaluation Report - Hardcopy Received | | | | | | | | |
| Florida Engineer or Architect Name who developed the Evaluation Report | Walter A. Tillit Jr., P.E. | | | | | | | | |
| Florida License | PE-44167 | | | | | | | | |
| Quality Assurance Entity | National Accreditation and Management Institute | | | | | | | | |
| Quality Assurance Contract Expiration Date | 12/31/2021 | | | | | | | | |
| Validated By | John W. Knezevich, PE <input checked="" type="checkbox"/> Validation Checklist - Hardcopy Received | | | | | | | | |
| Certificate of Independence | FL14444 R4 COI ROLLING DOORS INDUSTRIES COI 20-212.pdf FL14444 R4 COI ROLLING DOORS INDUSTRIES COI 20-213.pdf FL14444 R4 COI ROLLING DOORS INDUSTRIES COI 20-214.pdf | | | | | | | | |
| Referenced Standard and Year (of Standard) | <table border="0"> <thead> <tr> <th><u>Standard</u></th> <th><u>Year</u></th> </tr> </thead> <tbody> <tr> <td>TAS 201</td> <td>1994</td> </tr> <tr> <td>TAS 202</td> <td>1994</td> </tr> <tr> <td>TAS 203</td> <td>1994</td> </tr> </tbody> </table> | <u>Standard</u> | <u>Year</u> | TAS 201 | 1994 | TAS 202 | 1994 | TAS 203 | 1994 |
| <u>Standard</u> | <u>Year</u> | | | | | | | | |
| TAS 201 | 1994 | | | | | | | | |
| TAS 202 | 1994 | | | | | | | | |
| TAS 203 | 1994 | | | | | | | | |
| Equivalence of Product Standards | | | | | | | | | |
| Certified By | | | | | | | | | |
| Sections from the Code | | | | | | | | | |

Product Approval Method

Method 1 Option D

Date Submitted

10/06/2020

Date Validated

10/08/2020

Date Pending FBC Approval

10/23/2020

Date Approved

12/15/2020

Summary of Products

| FL # | Model, Number or Name | Description |
|---|--|--|
| 14444.1 | 14'-2" MAX. WIDE 24 GAGE SLAT ROLL UP DOOR | COLD FORMED SLATS INTERLOCKED TOGETHER AND RETAINED BY TRACKS TO PROVIDE HURRICANE PROTECTION AND ENTRANCE CLOSURE. |
| Limits of Use Approved for use in HVHZ: Yes Approved for use outside HVHZ: Yes Impact Resistant: Yes Design Pressure: +60/-60 Other: Large Missile. Max span is 14'-2" for +/- 60 psf ASD Design Load. See sheet 3 of installation drawings for other spans and pressures. | | Installation Instructions FL14444 R4 II ROLLING DOORS INDUSTRIES DRWG 20-214.pdf Verified By: Walter A. Tillit Jr., P.E. PE 44167 Created by Independent Third Party: Yes Evaluation Reports FL14444 R4 AE ROLLING DOORS INDUSTRIES PER 20-214.pdf Created by Independent Third Party: Yes |
| 14444.2 | 16'-2" MAX. WIDE 22 GAGE SLAT ROLL UP DOOR | COLD FORMED SLATS INTERLOCKED TOGETHER AND RETAINED BY TRACKS TO PROVIDE HURRICANE PROTECTION AND ENTRANCE CLOSURE. |
| Limits of Use Approved for use in HVHZ: Yes Approved for use outside HVHZ: Yes Impact Resistant: Yes Design Pressure: +65/-65 Other: Large Missile. Max span is 16'-2" for +/- 65 psf ASD Design Load. See sheet 3 of installation drawings for other spans and pressures. | | Installation Instructions FL14444 R4 II ROLLING DOORS INDUSTRIES DRWG 20-212.pdf Verified By: Walter A. Tillit, Jr. P.E. PE 44167 Created by Independent Third Party: Yes Evaluation Reports FL14444 R4 AE ROLLING DOORS INDUSTRIES PER 20-212.pdf Created by Independent Third Party: Yes |
| 14444.3 | 26'-0" MAX. WIDE 20 GAGE SLAT ROLL UP DOOR | COLD FORMED SLATS INTERLOCKED TOGETHER AND RETAINED BY TRACKS TO PROVIDE HURRICANE PROTECTION AND ENTRANCE CLOSURE. |
| Limits of Use Approved for use in HVHZ: Yes Approved for use outside HVHZ: Yes Impact Resistant: Yes Design Pressure: +70/-70 Other: Large Missile. Max span is 26'-0" for +/- 70 psf ASD Design Load. See sheet 3 of installation drawings for other spans and pressures. | | Installation Instructions FL14444 R4 II ROLLING DOORS INDUSTRIES DRWG 20-213.pdf Verified By: Walter A. Tillit Jr., P.E. PE 44167 Created by Independent Third Party: Yes Evaluation Reports FL14444 R4 AE ROLLING DOORS INDUSTRIES PER 20-213.pdf Created by Independent Third Party: Yes |

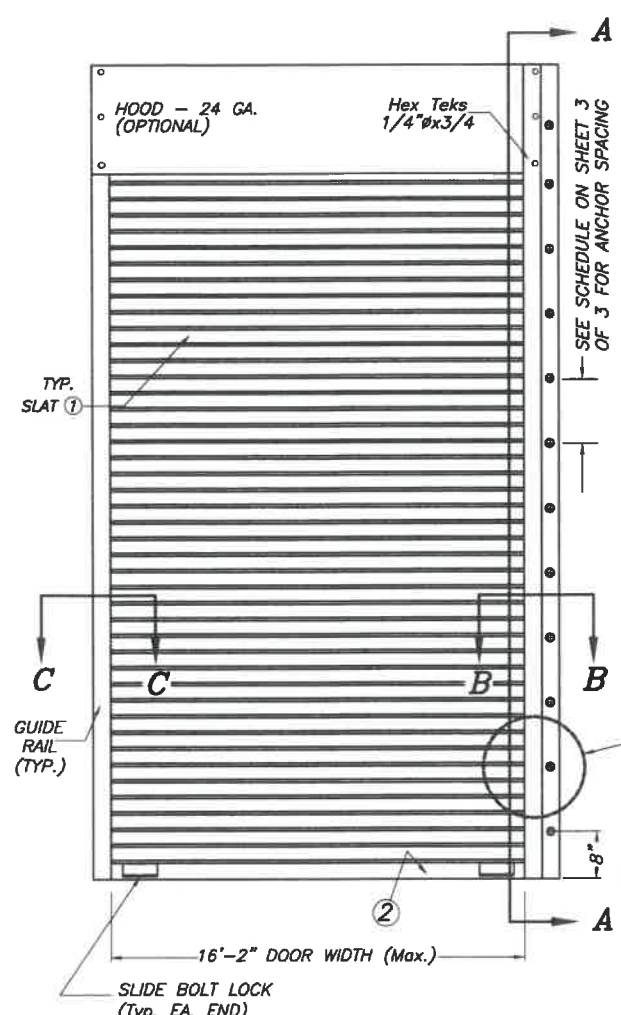
[Back](#) [Next](#)

[Contact Us](#) :: 2601 Blair Stone Road, Tallahassee FL 32399 Phone: 850-487-1824

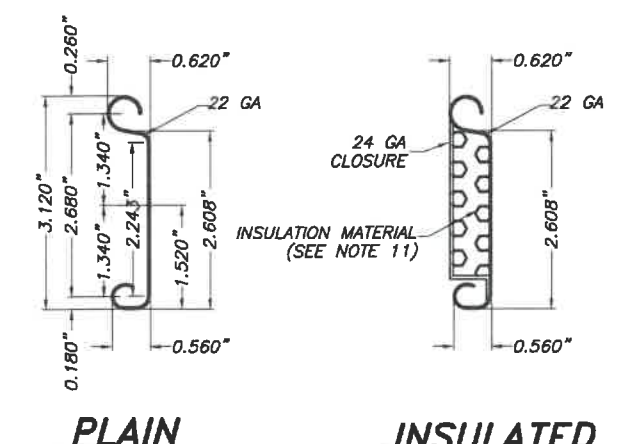
The State of Florida is an AA/EEO employer. [Copyright 2007-2013 State of Florida.](#) :: [Privacy Statement](#) :: [Accessibility Statement](#) :: [Refund Statement](#)

Under Florida law, email addresses are public records. If you do not want your e-mail address released in response to a public-records request, do not send electronic mail to this entity. Instead, contact the office by phone or by traditional mail. If you have any questions, please contact 850.487.1395. *Pursuant to Section 455.275(1), Florida Statutes, effective October 1, 2012, licensees licensed under Chapter 455, F.S. must provide the Department with an email address if they have one. The emails provided may be used for official communication with the licensee. However email addresses are public record. If you do not wish to supply a personal address, please provide the Department with an email address which can be made available to the public. To determine if you are a licensee under Chapter 455, F.S., please click [here](#).

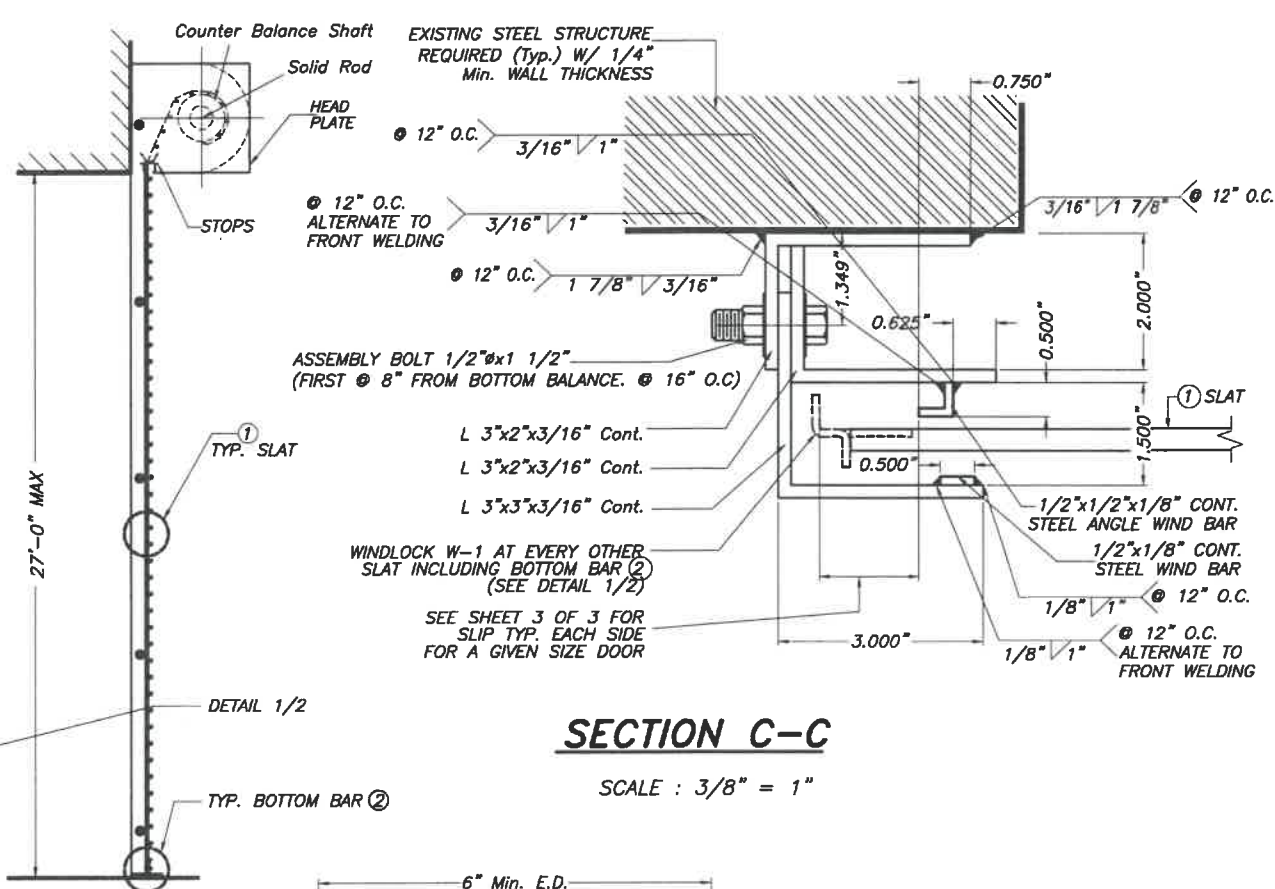




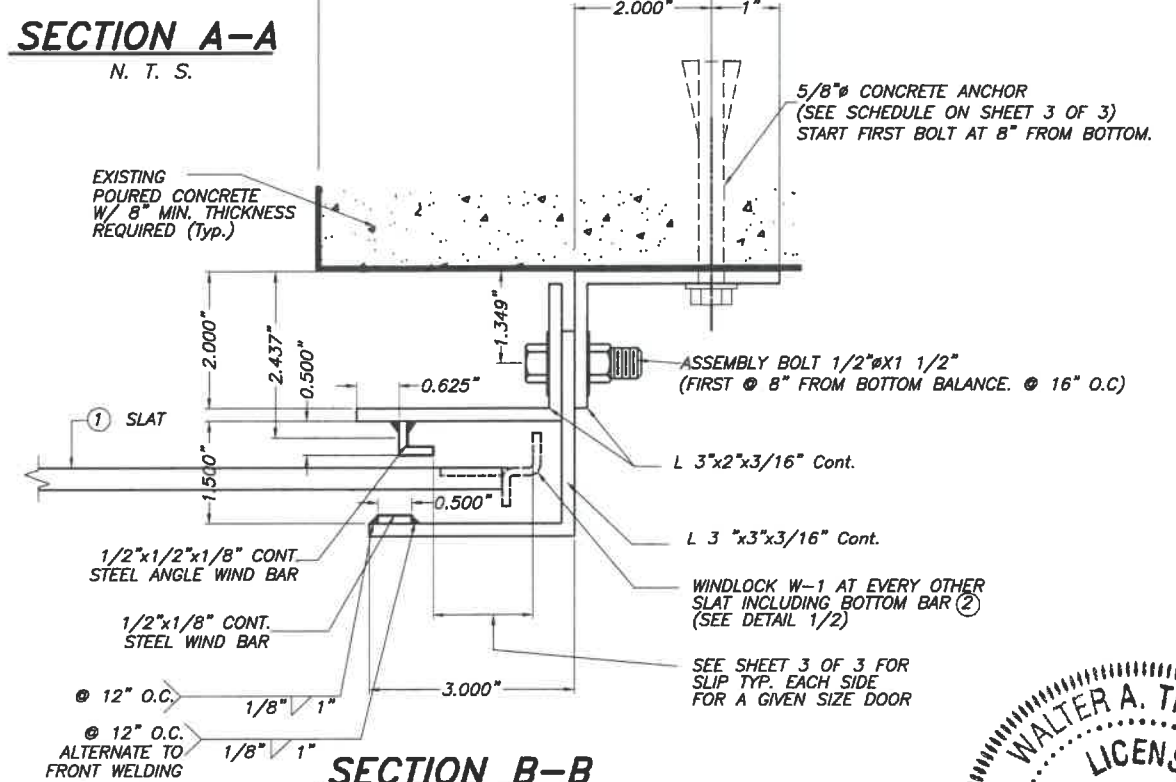
TYPICAL DOOR ELEVATION
N. T. S.



1 FLAT SLAT
SCALE : 1/2" = 1"



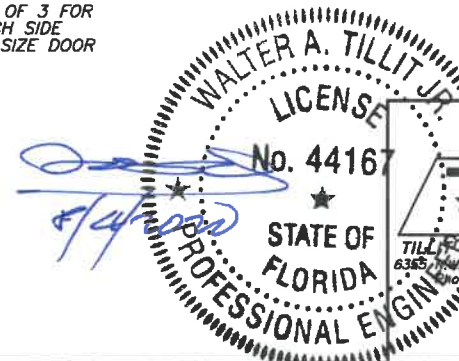
SECTION C-C
SCALE : 3/8" = 1"



SECTION B-B
SCALE : 3/8" = 1"

THIS DRAWING SHALL ONLY BE USED TO OBTAIN PERMITS IN THE STATE OF FLORIDA

- GENERAL NOTES:**
- ROLL-UP DOOR SHOWN ON THIS PRODUCT EVALUATION DOCUMENT (P.E.D.) HAS BEEN VERIFIED FOR CODE COMPLIANCE IN ACCORDANCE WITH THE 2020 (7th EDITION) OF THE FLORIDA BUILDING CODE. DESIGN WIND LOADS SHALL BE DETERMINED AS PER SECTION 1620 OF THE ABOVE MENTIONED CODE, FOR A WIND SPEED AS REQUIRED BY THE JURISDICTION WHERE THESE SHUTTERS WILL BE INSTALLED AND FOR A DIRECTIONALITY FACTOR $K_d=0.85$. USING ASCE 7-16 AND SHALL NOT EXCEED THE MAXIMUM (A.S.D.) DESIGN PRESSURE RATINGS INDICATED ON THIS NOTE 1.
 - IN ORDER TO VERIFY THE ABOVE CONDITION, ULTIMATE DESIGN WIND LOADS DETERMINED PER ASCE 7-16 SHALL BE FIRST REDUCED TO A.S.D. DESIGN WIND LOADS BY MULTIPLYING THEM BY 0.6 IN ORDER TO COMPARE THESE W/ MAX. (A.S.D) DESIGN PRESSURE RATINGS INDICATED ON THIS NOTE 1.
 - ROLL-UP DOOR'S ADEQUACY FOR IMPACT AND FATIGUE RESISTANCE HAS BEEN VERIFIED IN ACCORDANCE WITH SECTION 1626 OF THE ABOVE MENTIONED CODE AS PER FENESTRATION TESTING LABORATORY, INC. REPORT # 5081, PER TAS-201, TAS-202 & TAS-203 PROTOCOLS.
- MAX. A.S.D. DESIGN PRESSURE RATING: +65.0, -65.0 PSF
- SLAT TO BE A.S.T.M. A-653 GR 50 STRUCTURAL QUALITY STEEL WITH MIN $F_y = 50.0$ ksi. AND G-90 GALVANIZING PER A.S.T.M. A-653, OR A.I.S.I. 304 SERIES STAINLESS STEEL MANUFACTURED WITH A MINIMUM YIELD STRENGTH OF $F_y = 50.0$ ksi.
 - ALL STEEL ANGLES TO BE A.S.T.M. A-36 DESIGNATION, SHOP PRIMED AGAINST CORROSION PRIOR TO INSTALLATION.
 - WINDLOCKS TO BE "MALLEABLE IRON" $F_y = 42$ ksi OR A.I.S.I. DESIGNATION STEEL W/ $F_y = 40$ ksi., CHROME OR NICKEL PLATED.
 - ALL ASSEMBLY BOLTS TO BE S.A.E. GRADE 2 CADMIUM PLATED OR GALVANIZED STEEL.
 - STEEL WINDBARS TO BE A.S.T.M. A-36 DESIGNATION, SHOP PRIMED PRIOR TO INSTALLATION.
 - HOOD TO BE 24 GA. A.S.T.M. A-653 DESIGNATION G-90 FINISH TYPE COATING.
 - ALL RIVETS TO BE A.I.S.I. C1006 SPHERODIZED ANNEALED ALUMINUM LOW CARBON COLD HEADING QUALITY STEEL, ZINC PLATED, W/ 55.0 ksi. MINIMUM TENSILE STRENGTH, AS MANUFACTURED BY UNIVERSAL RIVET, INC.
 - CONCRETE ANCHORS TO BE AS PER SHEET 3 OF 3 AND SHALL BE INSTALLED FOLLOWING ALL OF THE RECOMMENDATIONS AND SPECIFICATIONS OF THE ANCHOR'S MANUFACTURER.
 - ALL WELDING TO CONFORM TO AMERICAN WELDING SOCIETY'S AWS D1.1 REGULATIONS. USE A.W.S A5.1 OR A5.5 E60XX ELECTRODES MIN. 3/16" FILLET SIZE.
 - INSULATION MATERIAL SHALL BE EPS-EXPANDED POLYSTYRENE INSULATION, MANUFACTURED BY DYPLAST PRODUCTS LLC., W/ MIAMI DADE COUNTY PRODUCT APPROVAL.
 - IT SHALL BE THE RESPONSIBILITY OF THE CONTRACTOR TO VERIFY THAT THE EXISTING STRUCTURE IS DESIGNED TO SUPPORT V_x AND V_y FORCES AT BOTH JAMBS. SEE SCHEDULE ON SHEET 3 OF 3, FOR V_x & V_y VALUES.
 - ROLL-UP MECHANISM NOT PART OF THIS APPROVAL.
 - (A) THIS P.E.D. PREPARED BY THIS ENGINEER IS GENERIC AND DOES NOT PROVIDE INFORMATION FOR A SITE SPECIFIC PROJECT; I.E. WHERE THE SITE CONDITIONS DEVIATE FROM THE P.E.D.
(B) CONTRACTOR TO BE RESPONSIBLE FOR THE SELECTION, PURCHASE AND INSTALLATION OF THIS PRODUCT BASED ON THIS P.E.D. PROVIDED HE/SHE DOES NOT DEVIATE FROM THE CONDITIONS DETAILED ON THIS DOCUMENT. CONSTRUCTION SAFETY AT SITE IS THE CONTRACTOR'S RESPONSIBILITY.
(C) THIS P.E.D. WILL BE CONSIDERED INVALID IF MODIFIED.
(D) SITE SPECIFIC PROJECTS SHALL BE PREPARED BY A FLORIDA REGISTERED ENGINEER OR ARCHITECT WHICH WILL BECOME THE ENGINEER OF RECORD (E.O.R.) FOR THE PROJECT AND WHO WILL BE RESPONSIBLE FOR THE PROPER USE OF THE P.E.D. ENGINEER OF RECORD, ACTING AS A DELEGATED ENGINEER TO THE P.E.D. ENGINEER, SHALL SUBMIT TO THIS LATTER THE SITE SPECIFIC DRAWINGS FOR REVIEW.
(E) ORIGINAL P.E.D. SHALL BEAR THE DATE AND ORIGINAL SEAL AND SIGNATURE OF THE PROFESSIONAL ENGINEER OF RECORD THAT PREPARED IT.
 - PRODUCTS MANUFACTURER'S LABEL SHALL BE LOCATED ON A READILY VISIBLE LOCATION AT DOOR. ONE LABEL SHALL BE PLACED FOR EVERY OPENING. LABELING TO COMPLY WITH SECTION 1709.5.2.1.1 OF THE FLORIDA BUILDING CODE.



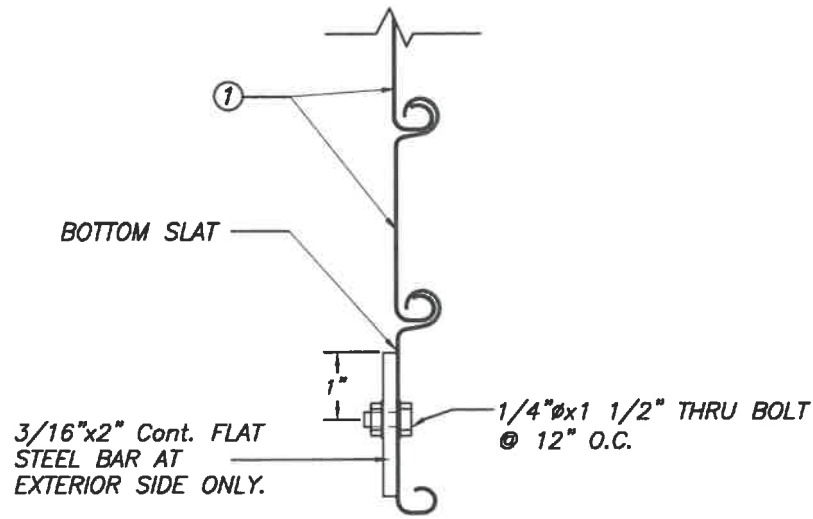
© 2020 TILTECO, INC.

TILTECO INC.

TESTING & ENGINEERING COMPANY
6385 N.W. 15th St., Ste. 305, VIRGINIA GARDENS, FL 33186
(305)871-1530 Fax: (305)871-1531
e-mail: tilteco@aol.com
CA-0006719
WALTER A. TILLIT Jr. P.E.
FLORIDA Lic. # 44167

Florida Building Code (High Velocity Hurricane Zone)

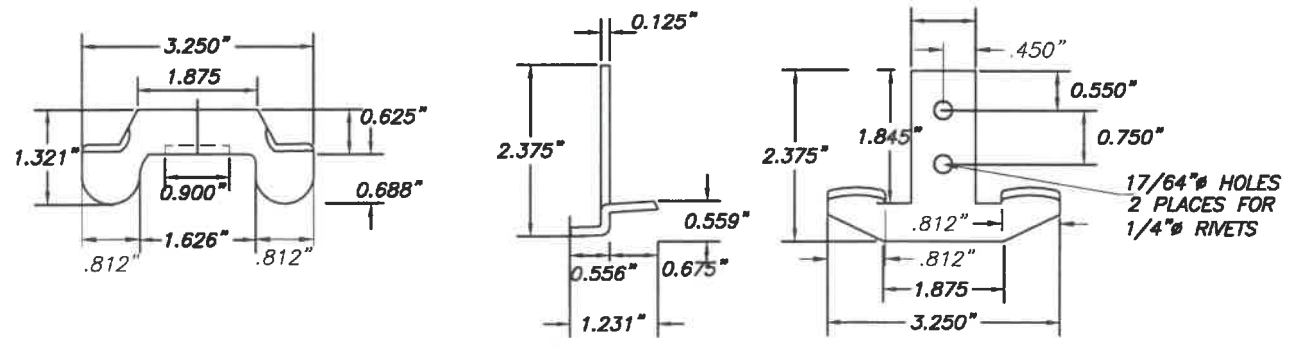
| | | | | | |
|--|-------------|----------|-------------------|-------------|------|
| 16'-2" MAX. 22 GAGE SLAT ROLL-UP DOOR | | | DRAWN BY: F.P. | | |
| ROLLING DOOR INDUSTRIES, LLC. | | | 07/21/2020 DATE | | |
| 8214 NW 64 ST MIAMI, FL 33186 PH: 305-599-9977 FAX: 305-599-9979 | | | 20-212 DRAWING No | | |
| REV. NO | DESCRIPTION | DATE | REV. No | DESCRIPTION | DATE |
| 1 | OLD 17-245 | 07/21/20 | | | |
| 2 | | | | | |



SECTION XI

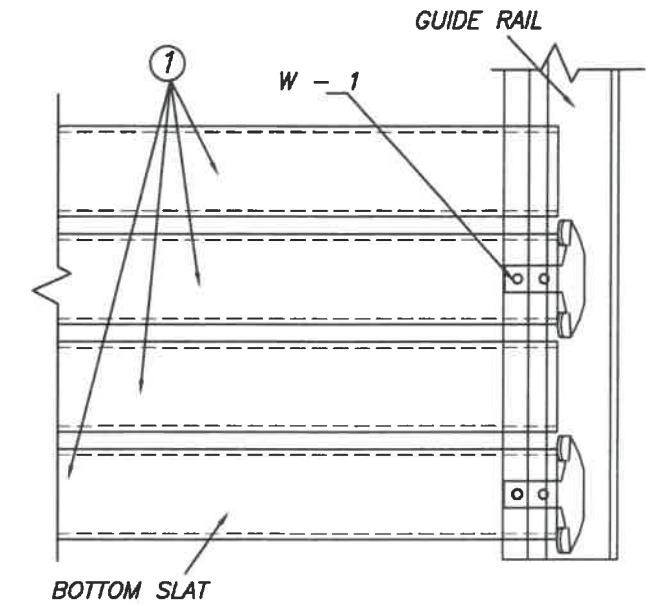
② BOTTOM BAR DETAIL

SCALE : 3/8" = 1"



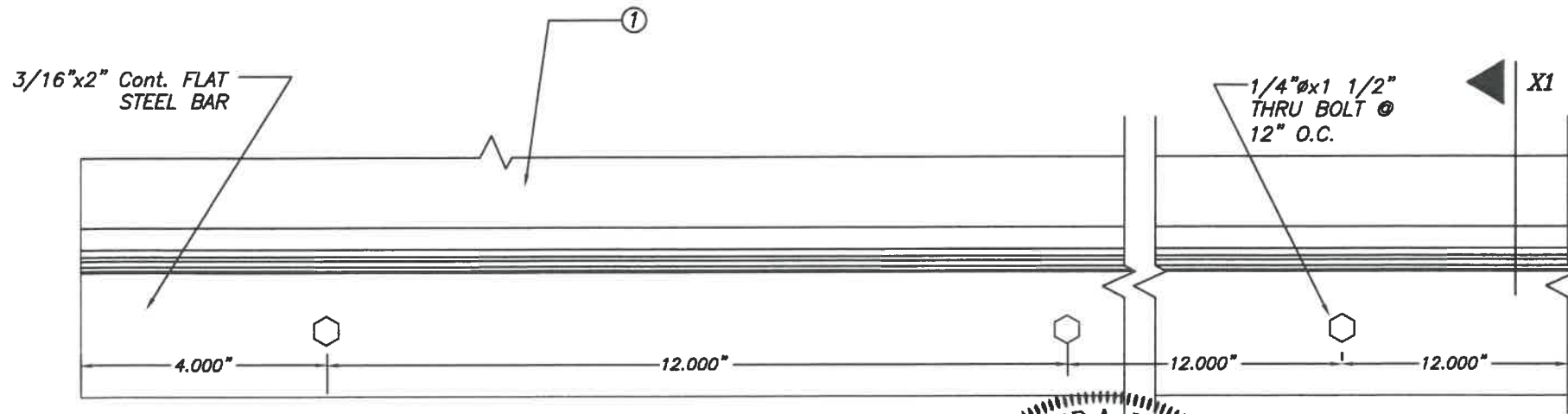
TYPICAL WINDLOCK W - 1 DETAIL

SCALE : 3/8" = 1"



DETAIL 1 (elevation)

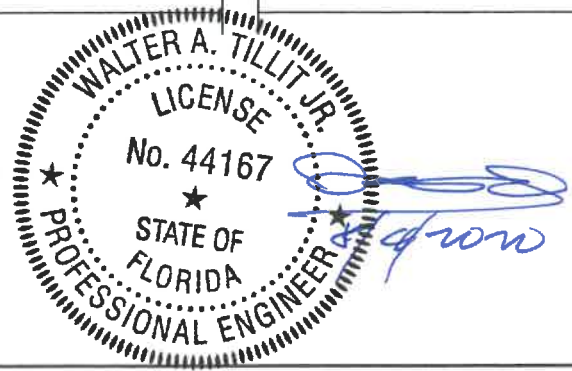
N. T. S.



ELEVATION

BOTTOM BAR ②

SCALE : 3/8" = 1"



©2020 TILTECO, INC.

TILTECO INC.

TILLIT TESTING & ENGINEERING COMPANY
 6355 N.W. 36th St., Ste. 305, VIRGINIA GARDENS, FL 33166
 Phone : (305)871-1530 . Fax : (305)871-1531
 e-mail: tilteco@aol.com
 CA-0006719
 WALTER A. TILLIT Jr. P.E.
 FLORIDA Lic. # 44167

Florida Building Code (High Velocity Hurricane Zone)

16'-2" MAX. 22 GAGE SLAT ROLL-UP DOOR

DRAWN BY:
F.P.

ROLLING DOOR INDUSTRIES, LLC.

07/21/2020
DATE

8214 NW 64 ST
MIAMI, FL 33166

PH: 305-599-9977 FAX: 305-599-9979

20-212

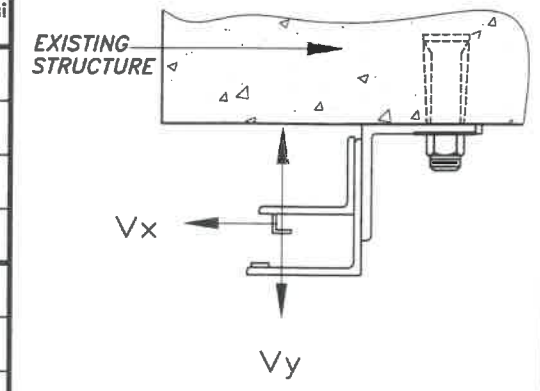
DRAWING No

| REV. NO | DESCRIPTION | DATE | REV. No | DESCRIPTION | DATE |
|---------|-------------|----------|---------|-------------|------|
| 1 | OLD 17-245 | 07/21/20 | | | |
| 2 | | | | | |

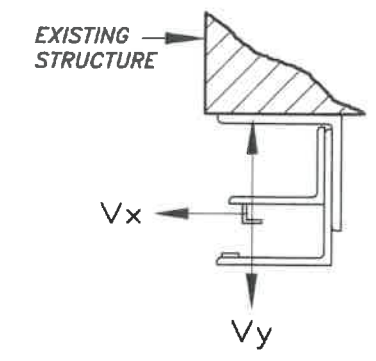
SHEET 2 OF 3

Vx & Vy REACTIONS & ANCHOR SPACING SCHEDULE

| MAXIMUM A.S.D. DESIGN PRESSURE RATING (PSF) | DOOR WIDTH (Ft.) | SLIP (In) | Vx (Lb/Ft) | Vy (Lb/Ft) | MAX. ANCHOR SPACING TO POURED CONCRETE | | | | | | | | | | | | | | | |
|---|------------------|-----------|------------|------------|--|-----------------------------|------------------|------------------|------------------|------------------|-------------------|------------------|------------------|------------------|------------------|------------------|------------------|------------------|--|--|
| | | | | | A * | | B * | | | | C * | | | | D * | | | | | |
| | | | | | f'c = 2 ksi Min. | f'c = 3 ksi Min. OR GREATER | f'c = 2 ksi Min. | f'c = 3 ksi Min. | f'c = 4 ksi Min. | f'c = 6 ksi Min. | f'c = 2 ksi Min. | f'c = 3 ksi Min. | f'c = 4 ksi Min. | f'c = 6 ksi Min. | f'c = 2 ksi Min. | f'c = 3 ksi Min. | f'c = 4 ksi Min. | f'c = 6 ksi Min. | | |
| +50.0, -50.0 | 10'-0" | 7/32" | 891 | 250 | 12" | 12" | 12" | 12" | 12" | 12" | 12" | 12" | 12" | 12" | 12" | 12" | 12" | 12" | | |
| | 12'-0" | 3/8" | 1051 | 300 | 12" | 12" | 12" | 12" | 12" | 12" | 11" | 12" | 12" | 12" | 11" | 12" | 12" | 12" | | |
| | 14'-0" | 5/8" | 1125 | 350 | 12" | 12" | 12" | 12" | 12" | 12" | 10 1/2" | 12" | 12" | 12" | 10" | 12" | 12" | 12" | | |
| | 16'-2" | 1" | 1179 | 404 | 12" | 12" | 12" | 12" | 12" | 12" | 9 1/2" | 11 1/2" | 12" | 12" | 9 1/2" | 12" | 12" | 12" | | |
| +55.0, -55.0 | 10'-0" | 7/32" | 1017 | 275 | 12" | 12" | 12" | 12" | 12" | 12" | 11 1/2" | 12" | 12" | 12" | 11 1/2" | 12" | 12" | 12" | | |
| | 12'-0" | 3/8" | 1180 | 330 | 12" | 12" | 12" | 12" | 12" | 12" | 10" | 12" | 12" | 12" | 10" | 12" | 12" | 12" | | |
| | 14'-0" | 5/8" | 1254 | 385 | 12" | 12" | 11 1/2" | 12" | 12" | 12" | 9" | 11" | 12" | 12" | 9" | 11 1/2" | 12" | 12" | | |
| | 16'-2" | 1" | 1308 | 445 | 12" | 12" | 11" | 12" | 12" | 12" | 8 1/2" | 10 1/2" | 12" | 12" | 8 1/2" | 10 1/2" | 12" | 12" | | |
| +60.0, -60.0 | 10'-0" | 7/32" | 1141 | 300 | 12" | 12" | 12" | 12" | 12" | 12" | 10 1/2" | 12" | 12" | 12" | 10 1/2" | 12" | 12" | 12" | | |
| | 12'-0" | 3/8" | 1307 | 360 | 12" | 12" | 11" | 12" | 12" | 12" | 9" | 10 1/2" | 12" | 12" | 9" | 11" | 12" | 12" | | |
| | 14'-0" | 5/8" | 1381 | 420 | 11 1/2" | 12" | 10 1/2" | 11 1/2" | 12" | 12" | 8 1/2" | 10" | 11 1/2" | 12" | 8 1/2" | 10 1/2" | 12" | 12" | | |
| | 16'-2" | 1" | 1436 | 485 | 11" | 12" | 10" | 11" | 12" | 12" | 8" | 9 1/2" | 11" | 12" | 8" | 9 1/2" | 11 1/2" | 12" | | |
| +65.0, -65.0 | 10'-0" | 7/32" | 1263 | 325 | 12" | 12" | 11 1/2" | 12" | 12" | 12" | 9 1/2" | 11" | 12" | 12" | 9 1/2" | 11 1/2" | 12" | 12" | | |
| | 12'-0" | 3/8" | 1432 | 390 | 11" | 12" | 10" | 11 1/2" | 12" | 12" | 8" | 9 1/2" | 11 1/2" | 12" | 8" | 10" | 12" | 12" | | |
| | 14'-0" | 5/8" | 1507 | 455 | 10 1/2" | 12" | 9 1/2" | 10 1/2" | 11 1/2" | 12" | 7" \diamond | 9" | 10 1/2" | 12" | 7 1/2" | 9 1/2" | 11" | 12" | | |
| | 16'-2" | 1" | 1562 | 525 | 10" | 12" | 9" | 10" | 11" | 12" | 6 1/2" \diamond | 8 1/2" | 10" | 12" | 7 1/2" | 9" | 10 1/2" | 11 1/2" | | |

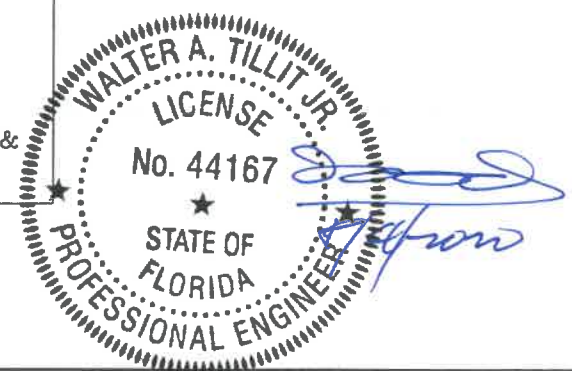


LOAD DIAGRAM



LOAD DIAGRAM

*
A - 5/8" ϕ HILTI KWIK BOLT TZ EXPANSION ANCHOR @ 10" Min. SPACING.
B - 5/8" ϕ HILTI KWIK BOLT 3 EXPANSION ANCHOR @ 9" Min. SPACING. ONLY ALLOWED TO BE USED AT JURISDICTIONS WHERE COMPLIANCE W/ ACI 318-05 APPENDIX D IS NOT ENFORCED BY BUILDING OFFICIAL.
C - 5/8" ϕ HILTI HUS-H SCREW ANCHOR @ 8" Min. SPACING EXCEPT WHERE \diamond MARK 6 1/2" Min. SPACING IS ALLOWED.
D - 5/8" ϕ DEWALT WEDGE BOLT ANCHOR W/ 7 1/2" Min. SPACING.
 ALL 3 ANCHORS W/ 4" MINIMUM EMBEDMENT, 6" MIN. EDGE DISTANCE & 8" MIN. WALL THICKNESS.



©2020 TILTECO, INC.
TILTECO INC.
 TILLIT TESTING & ENGINEERING COMPANY
 6355 N.W. 36th St., Ste. 305, MIRAMIA GARDENS, FL 33166
 Phone: (305)871-1530 Fax: (305)871-1531
 e-mail: tilteco@aol.com
 CA-0006719
 WALTER A. TILLIT Jr. P.E.
 FLORIDA Lic. # 44167

Florida Building Code (High Velocity Hurricane Zone)

| | | | | | |
|---|-------------|----------|-------------------|-------------|------|
| 16'-2" MAX. 22 GAGE SLAT ROLL-UP DOOR | | | DRAWN BY: F.P. | | |
| ROLLING DOOR INDUSTRIES, LLC. | | | 07/21/2020 DATE | | |
| 8214 NW 64 ST MIAMI, FL. 33166 PH: 305-599-9977 FAX: 305-599-9979 | | | 20-212 DRAWING No | | |
| REV. NO | DESCRIPTION | DATE | REV. No | DESCRIPTION | DATE |
| 1 | OLD 17-245 | 07/21/20 | | | |
| 2 | | | | | |